



ESH&A Newsletter - September 2016

Your Eyes On Safety

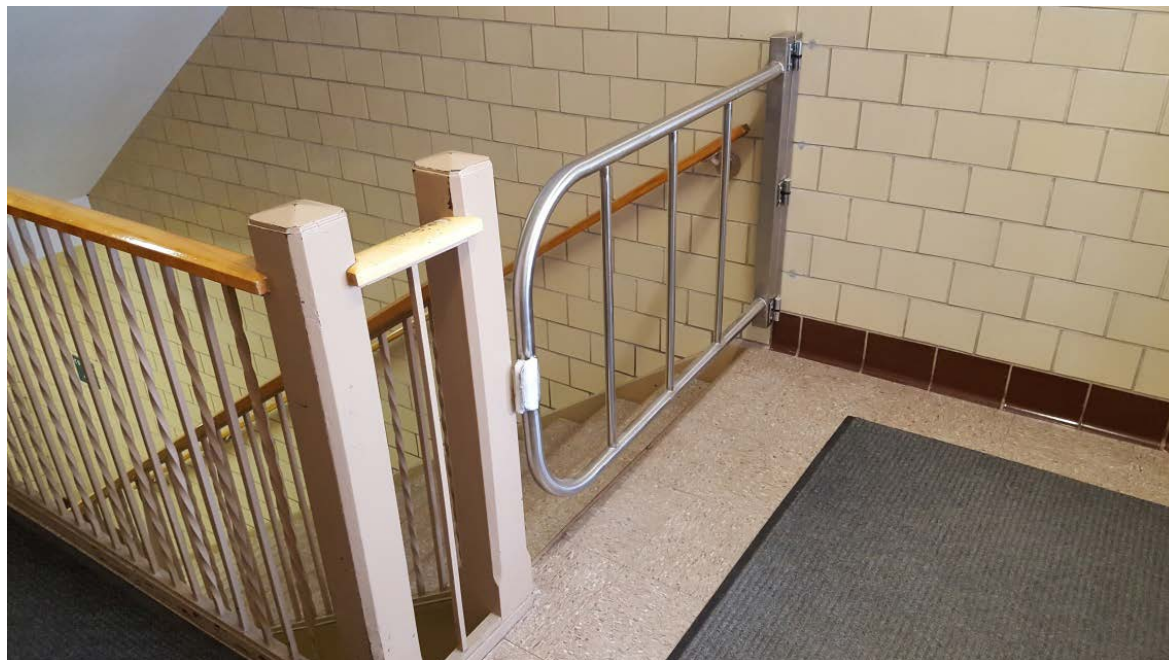
[Employee Concern Program](#)

Ames Lab has a long history of listening to employees when it comes to fixing health and safety issues. ESH&A staff can't be everywhere, so we need your help to find and correct potential problems. Anytime you see something that concerns you please call or visit our office, or email us at [safety](#). You can always ask to be anonymous.

Below are some recent examples of employee concerns that added safety value to the Laboratory. Thanks for your contributions!



Mirrors were added at hallway junctions to improve pedestrian safety.



A barrier gate was added at the Spedding dock entrance to prevent loads and handlers from falling down the stairs.



330 Spedding got new flooring after water seepage and mold was reported by occupants. The water infiltration was also corrected.

**September Safety Hero
SPIP Review Team**

This month's safety Hero is the Safety Performance Improvement Plan (SPIP) Effectiveness Review Team. The team members (3 from sister Labs and 1 from ISU) dedicated a significant amount of their time to review our SPIP, evaluate our progress, and provide recommendations for continued improvement. The team's service and dedication to worker safety and health deserves a hearty thank you.

Look for an update on review findings in a forthcoming Director's Message.



SPIP Effectiveness Review Team, from left to right: Steve Smith, Jefferson Lab; Mike McIntosh, Oakridge; Nancy VanWermeskerken, Argonne; and Bill Diesslin, Iowa State University.

(Sorry, no cape. They couldn't agree on who got to wear it.)

Fall is well...Fall Prevention Season

According to WWW.STOPFALLS.ORG, Falls are the number one cause of injury, hospital visits due to trauma, and death from an injury among people age 65 and older. It is estimated that one in three older adults falls each year. If you or an older loved one is at risk for injury due to a fall check out the resources at [FACT SHEETS](#), or [FALL PREVENTION BASICS](#).

LEARN@ISU

Moving Forward with Learn @ ISU

The Training Department is excited to be moving forward with the transition away from Cyber Train to the use of **Learn @ ISU** as the Laboratory's primary learning management system. The transition will take place over the upcoming months. Here is what you can expect:

- September-October 2016 the Training Department in conjunction with HR will be rolling out use of the Planned Activities Training Form during the hiring process. This form will:
 - Replace the Hazard Inventory and Training Needs Questionnaire forms,
 - Be used to identify laboratory activities of new employees prior to their first day of employment, and
 - Will give the Training Department a personalized training profile to enter into.

The Training Department will be meeting individually with group leaders over the course of the coming months to introduce this form and answer any specific questions you may have.

- Early November 2016 the Training Department will be reaching out to individuals in the Laboratory to request their participation in a trial run of **Learn @ ISU**. We will be asking this first set of users to explore the interface, test courses and provide feedback to the training department on their experience.
- January 2017 **Learn @ ISU** will be rolled out as the official Learning Management System for the Laboratory. It is still to be determined as to whether or not the Training Department will transition the Laboratory as a whole, or whether it will be a phased roll out. More information on the roll out will be provided to Laboratory employees later this year.

We are excited to be making this change and look forward to the positive change it will bring to the accessibility and usability of training modules at the Laboratory. Any questions can be directed to Hiliary Burns (hburns@ameslab.gov) or Molly Granseth (mgranseth@ameslab.gov).



Environmental Events in September:

On Campus – Live Green! Hosts:

[Local Food Festival: An Adventure in Eating](#), Central Campus, 9/13/16 @ 9:30am

Lecture: [A Wild Life](#), Stephens Auditorium, 9/15/16 @ 7:00pm

Lecture: [Polar Bears: An Arctic Icon in a Changing Climate](#) Great Hall of Memorial Union,
9/22/16
@ 7:00pm

Story County – Story County Conservation hosts:

[The Marvel of Monarch Migration](#), at McFarland Park, 9/10/16 @ 1:00pm

[TEAM \(Trail Enhancement and Management\) Day](#) Register for locations, 9/17/16 @ 9:00am

[Ames Area Amateur Astronomers - Gravitational waves](#), McFarland Park, 9/17/16 @ 7:00pm

[Ronald "Dick" Jordan Family Wildlife Area Open House and Raptor Release](#) 9/18/16 @ 2pm

265th Street Access
56091 265th Street
Ames, IA 50010

[Wild Women of the Woods](#) Hickory Grove Park, daily workshops 9/23/16-9/25/16



Updating Standard Operating Procedures!

September is a great time to review and update your laboratory's Standard Operating Procedures! Having new staff and students come on board can prove beneficial to this initiative. Using your SOPs to train these personnel on processes may reveal some improvements to the procedure for accuracy, efficiency and safety.

Are you new to the lab and implementing your own procedures? ESH&A has some resources to help you on our [SOP website](#).

In the last three months, 37 unique visitors have been to this website with 35% of those clicking on the Blank SOP template that can be used to write new SOPs.

One researcher's comment about using the template is that it's a good tool to make you think. We would like your help building our SOP library and feedback toward its continuous improvement. Is there a process common to your lab that you think others would benefit from? Is there a chemical that you are using that you need more information about?

[Contact us](#) with your comments, ideas and suggestions.



